



# MELBOURNE CONNECT

**VENUE GUIDE**



In partnership with:



# MELBOURNE CONNECT

## WELCOME

Melbourne Connect is an innovation precinct located in the heart of Carlton, on the doorstep of the University of Melbourne's Parkville campus.

Housing a hybrid of university and industry partners, as well as state-of-the-art postgraduate student accommodation and an Early Learning Centre onsite, Melbourne Connect is specifically designed for great minds to network and collaborate.

At the epicentre of Melbourne Connect is the Superfloor, a dedicated collaboration space that connects the dynamic meeting and events spaces of the precinct.

Located on the former Royal Women's Hospital site, on the corner of Swanston Street and Grattan Street, Melbourne Connect boasts smart and sustainable design and is well serviced by key transport links, bike paths and is close to green open spaces and a range of local dining, cafes and retail offerings.



We acknowledge and pay our respects to the Traditional Custodians of the lands upon which Melbourne Connect is situated.

# MELBOURNE CONNECT

## GETTING THERE



Melbourne Connect is easily accessible through a variety of transport options.

Public transport is the most convenient option.

Plan your trip by using the [PTV journey planner](#)



TRAM ROUTES:  
1, 3, 3A, 5, 6, 16, 64, 67, 72 & 19



FLINDERS STREET & MELBOURNE CENTRAL - CATCH CONNECTING  
TRAMS: 1, 3, 3A, 5, 16, 64, 67 & 72

NORTH MELBOURNE – CATCH CONNECTING BUS 401  
MACAULAY – CATCH CONNECTING BUS 402

PARKVILLE – (OPENING IN 2025 AS PART OF MELBOURNE METRO  
TUNNEL PROJECT)



BUS ROUTES:  
200, 207, 250, 251, 401, 402, 403, 505 & 546



PUBLIC BIKE PARKING SPACES ALONG GRATTAN AND  
SWANSTON STREETS



PICK UP AND DROP OFF POINT ARE LOCATED ON GRATTAN STREET  
TAXI RANK LOCATED ON GRATTAN STREET



CAR PARK: CARDIGAN HOUSE PARKING  
LOCATION: 96 GRATTAN ST, CARLTON VIC 3053

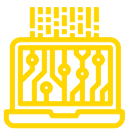
[For more information and prices.](#)

CAR PARK: UNIVERSITY OF MELBOURNE, PARKVILLE CAMPUS -  
EASTERN PRECINCT CAR PARK  
LOCATION: 375 CARDIGAN ST, CARLTON VIC 3053

[For more information and prices.](#)

# ABOUT MELBOURNE CONNECT

## BRINGING TOGETHER PEOPLE, PLACE AND PURPOSE TO AMPLIFY INNOVATION



### DIGITAL TECHNOLOGY HUB

World-leading research and development expertise in digital technology, with a focus on AI, data science and robotics.



### BRAND-BOOSTING ACTIVATIONS

Places where partner brands can shine, showcased through high profile space naming and event stream sponsorship, cutting-edge digital content solutions and event hire opportunities.



### INNOVATION ECOSYSTEM

A variety of co-working members and organisations from business, government and the social sector co-located with The University of Melbourne's Faculty of Engineering and Information Technology Centre for Artificial Intelligence and Data Ethics, the Melbourne Entrepreneurial Centre and Science Gallery Melbourne.



### SUPERFLOOR

At the epicentre of the precinct is the Melbourne Connect Superfloor. Spanning over 3,000sqm, it has the capacity to host up to 1,000 people. Equipped with state-of-the-art conference and event spaces and facilities, it is where leading researchers, start-ups and corporate partners collaborate and innovate together.



### MELBOURNE INNOVATION DISTRICT

District members will work together to nurture and amplify the city's innovation culture. Encompassing Melbourne Connect, The University of Melbourne, RMIT University and the City of Melbourne, 21 per cent (60,260) of all knowledge sector jobs are found within the district.



### SCIENCE GALLERY MELBOURNE

A major exhibition space to inspire and transform young curious minds through the collision of arts and science. Anticipating 225,000 visitors per year by 2024, Science Gallery is the public-facing arm of Melbourne Connect with dynamic public programming focused on people aged 15-25.

For general queries please email [info@melbourne.sciencegallery.com](mailto:info@melbourne.sciencegallery.com)



### POPULATION OF MINDS

A thriving precinct of students, industry, government and start-ups, home to more than 3,000 collaborators.



### TELSTRA CREATOR SPACE

Key to innovation is the early testing of ideas. The Telstra Creator Space serves the inventive spirit of 14,000 Engineering students with its onsite fabrication laboratory, and is available to the innovation precinct community for testing and prototyping.

For general queries please email [telstracreatorspace@unimelb.edu.au](mailto:telstracreatorspace@unimelb.edu.au)

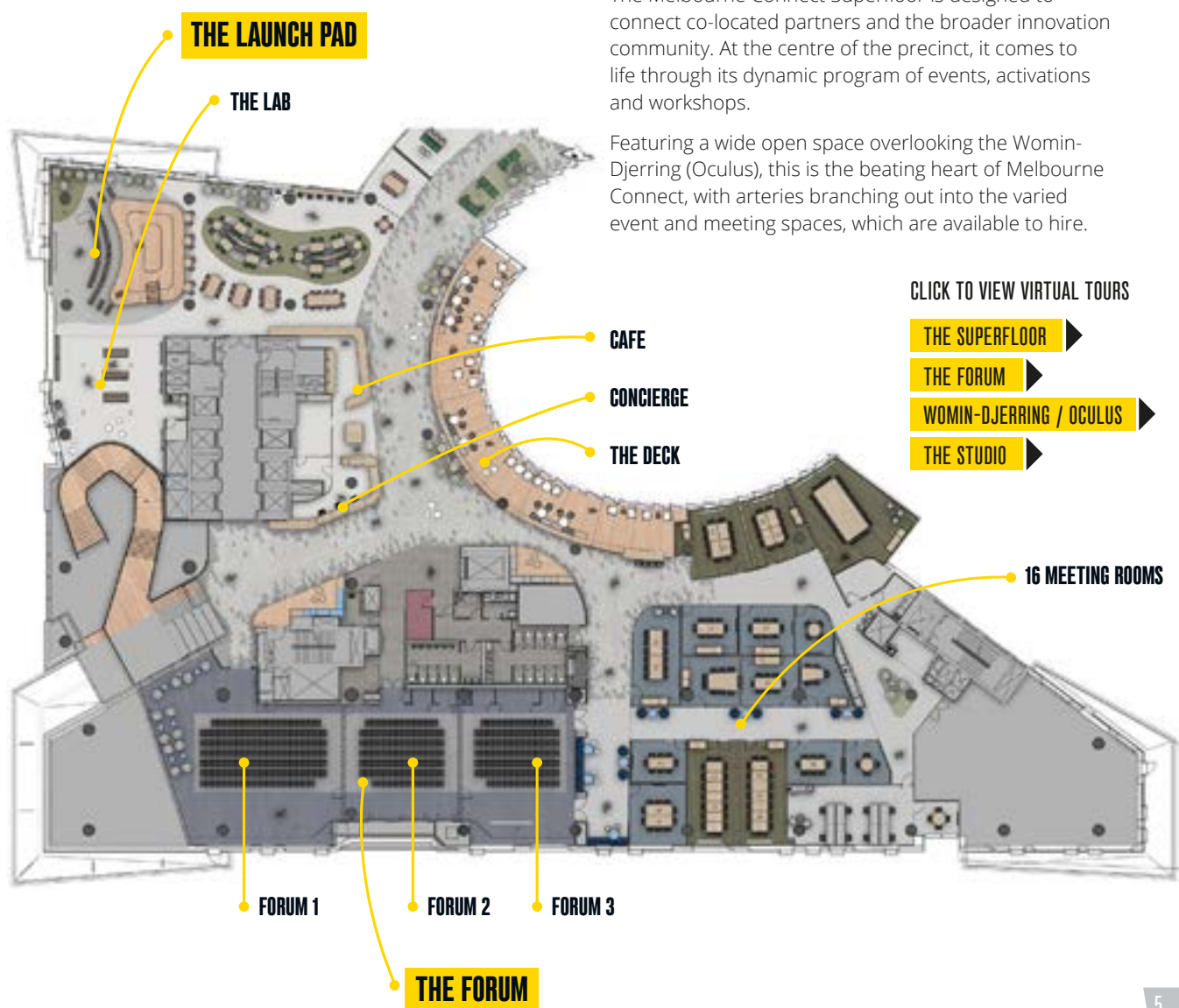


### ACCESS TALENT

Melbourne Connect is powered by The University of Melbourne, Australia's highest-ranked University with more than 5,000 researchers and 50,000 students.



# THE MELBOURNE CONNECT SUPERFLOOR



The Melbourne Connect Superfloor is designed to connect co-located partners and the broader innovation community. At the centre of the precinct, it comes to life through its dynamic program of events, activations and workshops.

Featuring a wide open space overlooking the Womin-Djerring (Oculus), this is the beating heart of Melbourne Connect, with arteries branching out into the varied event and meeting spaces, which are available to hire.

CLICK TO VIEW VIRTUAL TOURS

[THE SUPERFLOOR](#)

[THE FORUM](#)

[WOMIN-DJERRING / OCULUS](#)

[THE STUDIO](#)



# THE MELBOURNE CONNECT SUPERFLOOR

## FEATURES

- Capacity - up to 500 people
- Open plan and purpose built event spaces
- The epicentre of Melbourne Connect

The Superfloor is a dedicated collaboration space that connects the precinct.

The space is open and operational between 8am and 8pm, Monday to Friday, and offers a range of spaces available for hire.

The Superfloor brings the community together with year-round events and activations, while the common areas are available for exhibitions and after-hours special events (subject to approval).

Designed by leading architect Woods Bagot, the 3,600sqm Superfloor sets a new benchmark for spaces for collaboration and community activations. The Superfloor is available for use by all co-located partners and is the perfect place to host visitors, join an event or workshop, or meet for coffee.

Located at the main entrance of Melbourne Connect is the Concierge Desk, which is staffed on weekdays between 8.30am to 5.30pm. The friendly team at the Concierge Desk assists in welcoming visitors or directs Melbourne Connect enquiries.

Melbourne Connect has shared access to meeting rooms, which are bookable via our Concierge Team located on the Superfloor. The Deck lounge and seating areas around the Superfloor Cafe are also available for use during opening hours. There are other formal and informal-style bookable events spaces on the Superfloor such as the Forum and The Lab (mini exhibition space) for a venue hire fee.

Melbourne Connect is supported by a dedicated Events and Activations Team (contactable through Concierge) based at the Melbourne Connect Liaison Office at the northern end of the Superfloor. The team runs a year-round program of events and activations with many taking place on the Superfloor. Activities to participate in include networking and meet-ups, demo days, hackathons, launches, exhibitions, skills development, social and cultural events, innovation festivals and more.

The Superfloor Cafe is open weekdays with free WiFi available.

CLICK TO VIEW  
VIRTUAL TOUR



# THE FORUM

## FEATURES

- Located on the Superfloor, epicentre of the precinct
- Flexible space configurations with ability to create breakout rooms
- Soundproof operable walls
- View into the Science Gallery Melbourne's atrium gallery, displays of art and cultural installations
- Inbuilt event technology
- Support of Events Coordinator

## INBUILT EVENT TECHNOLOGY INCLUSIONS:

- Smart lectern with microphone
- High-Definition projector and screen
- Audio control system, with one handheld and one lapel microphone
- Access to high speed internet and wireless connectivity
- Touch panel control system for room lighting



A highly versatile space on the Melbourne Connect Superfloor, The Forum can host up to 400 people in a lecture type set up, 200 in a dining set up, or be split into three smaller rooms with 100 person capacity for events such as seminars, presentations and workshops.

Facilities rival those of a high-end purpose-built conference venue. The Forum looks into Science Gallery Melbourne's atrium gallery, providing guests with access to beautiful displays of art and cultural installations.



# THE FORUM



Cocktail (Stand-up Reception)



Theatre Seating



Cabaret (Rounds of 6-8)



Banquet (Rounds of 10)



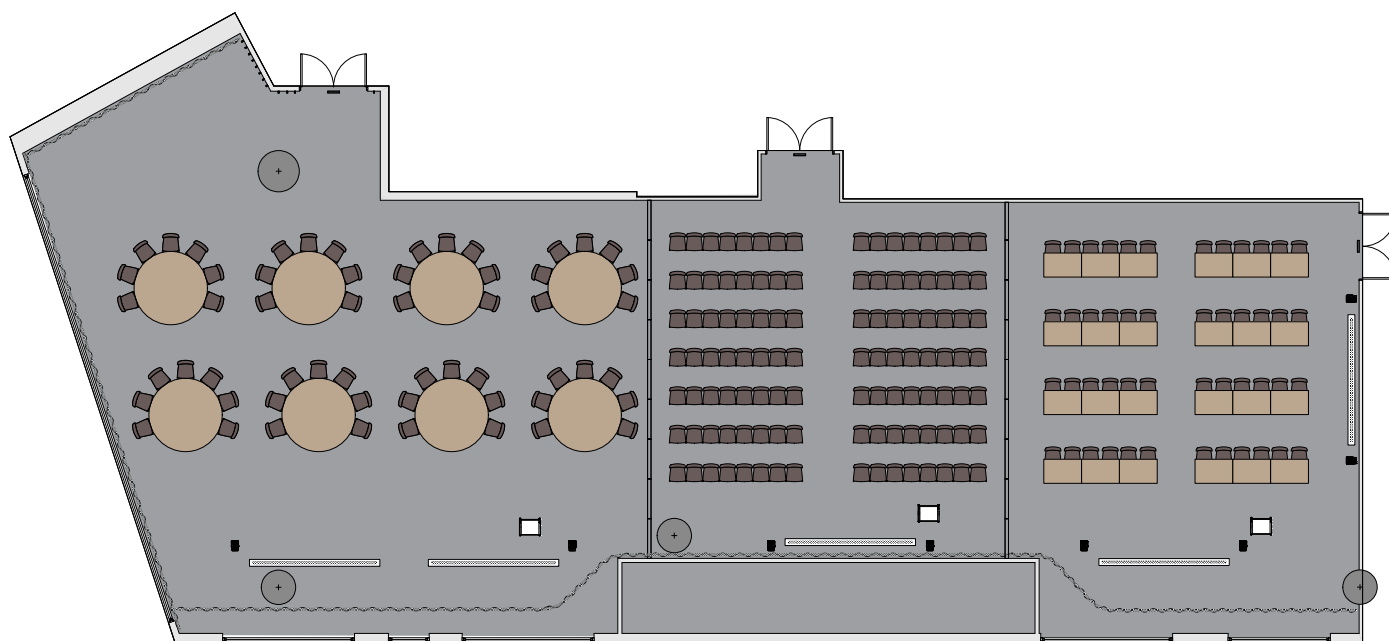
Workshop



Classroom layout

## FUNCTION ROOM SET UP STYLES

	Cabaret	Banquet	Classroom	Workshop	Theatre	Cocktail
Forum Combined	160	200	112	128	400	350
Forum Room 1	56	80	48	64	144	130
Forum Room 2	35	50	32	32	95	90
Forum Room 3	35	50	32	32	101	95
Forum Room 1&2	91	130	80	96	239	220
Forum Room 2&3	70	100	64	64	196	185







# THE LAUNCH PAD AND THE LAB

## FEATURES:

- Located on the Superfloor, high traffic area of the precinct
- Open plan space
- Inbuilt tiered seating
- Inbuilt event technology
- Support of Events Coordinator

## INBUILT EVENT TECHNOLOGY INCLUSIONS:

- Smart lectern with microphone
- High-Definition projector and screen
- Audio control system, with one handheld and one lapel microphone
- Access to high speed internet and wireless connectivity
- Touch panel control system for room lighting

Note: AV not included in The Lab space.



## FUNCTION ROOM SET UP STYLES

	Cabaret	Banquet	Classroom	Workshop	Theatre	Cocktail
Launch Pad*	N/A	N/A	N/A	N/A	60	N/A
The Lab	N/A	40	N/A	N/A	N/A	50
Launch Pad & The Lab	N/A	N/A	N/A	N/A	N/A	100

## THE LAB

The Lab is a mini-exhibition space that sits adjacent to The Launch Pad and can be used for networking and nibbles. This versatile space could be a accompaniment to your Launch Pad booking, or could be booked on its own as an exhibition space.

The Launch Pad showcases a central open plan area to facilitate ideation and knowledge sharing between co-located partners, the University, guests and the business sector. A dynamic space used for creating, prototyping, pitching and testing, it will be the hotspot of the Superfloor with an ever-changing canvas of events and activations.

\*Bookings subject to precinct approval.



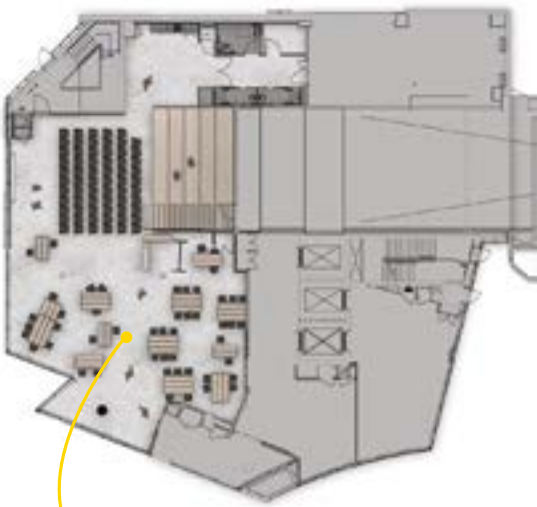
# THE STUDIO

## FEATURES:

- Floor to ceiling windows, providing plenty of natural light
- Inbuilt tiered seating for presentations
- Streetscape visibility, direct access to Womin-Djerring courtyard
- Inbuilt event technology
- Support of Events Coordinator

## INBUILT EVENT TECHNOLOGY INCLUSIONS:

- Smart lectern with microphone
- High-Definition projector and screen
- Audio control system, with one handheld and one lapel microphone
- Access to high speed internet and wireless connectivity
- Touch panel control system for room lighting



THE STUDIO (STREET LEVEL ACCESS)



## FUNCTION ROOM SET UP STYLES

	Cabaret	Banquet	Classroom	Workshop	Theatre	Cocktail
Studio	N/A	N/A	N/A	70	70	100

A hireable high-traffic space with ground floor exposure at Melbourne Connect, The Studio is a versatile space to host workshops and group activities. Visible to passers-by, it gives a sneak peek into Melbourne Connect's energetic and dynamic community.



# OCULUS / WOMIN-DJERRING



The open air Oculus space known as Womin-Djerring, which means Come Together, is available to hire for special events including a variety of activations and cocktail receptions.

\*Bookings subject to precinct approval.



# THE MEETING ROOMS



Melbourne Connect has 16 bookable meeting and board rooms located on the Superfloor in a variety of capacities, ranging from 4pax to 32pax. All rooms are equipped with inbuilt AV and Zoom video conferencing.

For a stand-alone meeting, these can be booked directly with our friendly Concierge Team at [conciergemelbconnect@unimelb.edu.au](mailto:conciergemelbconnect@unimelb.edu.au). If you are looking to book meeting rooms in conjunction with another event space to utilise for breakout sessions or workshops, please liaise directly with your dedicated Event Coordinator to organise this.

There is on-site meeting support from the Concierge Team and catering services are available through our exclusive catering partner Atlantic Group. Hot and cold beverages, meals and snacks can also be purchased from the Superfloor Cafe.

## MEETING ROOM SET UP STYLES

Room Name	Maximum Seated Capacity	Room Name	Maximum Seated Capacity
M01 - Meeting Room	12	M09 - Meeting Room	8
M01+M02 - Combined	20	M10 - Meeting Room	5
M02 - Meeting Room	12	M11 - Meeting Room	4
M03 - Boardroom	22	M12 - Meeting Room	8
M04 - Meeting Room	4	M13 - Meeting Room	14
M05 - Meeting Room	8	M13+M14 - Combined	32
M06 - Meeting Room	8	M14 - Meeting Room	14
M07 - Meeting Room	12	M15 - Meeting Room	8
M08 - Meeting Room	8	M16 - Meeting Room	10





# CAFE AND CATERING

ATLANTIC GROUP®

CLICK TO VIEW  
CURRENT MENUS

Atlantic Group®; the hospitality house with a tenacious reputation for creating extraordinary experiences unmatched by any other.

Atlantic Group® has a passion for parties, social celebrations and memorable moments. They will bring innovative and delicious culinary concepts to your next event.

Melbourne Connect has partnered with Atlantic Group® to manage catering for all of our event spaces. With a dedicated team on-site, expect to have a seamless experience.

Atlantic Group® at Melbourne Connect is committed to being a zero-waste enterprise. Suppliers have been chosen, wherever possible, on their sustainability measures, locality and Australian made content.

For a catering quote for your event, please contact: [mc-catering@atlanticgroup.com.au](mailto:mc-catering@atlanticgroup.com.au)



# ENQUIRIES AND ACTIVATION PROGRAM



## EVENT ENQUIRIES

Would you like to host your next conference, reception, workshop, seminar or exhibition at Melbourne Connect?

Please complete the form with below your event details and our team will be in touch.

[Event enquiry form](#)

## ACTIVATION PROGRAM

Melbourne Connect has come to life through a dynamic program of events and workshops designed to connect precinct co-located partners and the broader innovation community.

The Superfloor - a space designed for connection – hosts a dynamic and varied program of events and engagement activities. The program is curated across the year and is designed to inform, inspire and connect.

Should you be interested in participating in our Activation Program or have any ideas you would like to share with us, please email [events-melbconnect@unimelb.edu.au](mailto:events-melbconnect@unimelb.edu.au) and our team will be in contact with you.

